

# Princes Gardens Restoration Project



**For the Hanger Hill Garden Estate  
Residents Association**





# Introduction & Background

The Princes Gardens Restoration Project aims to transform the run down central reservation into a beautiful, yet sustainable, easy to manage and environmentally friendly area.

Following consultations with residents, surveys of the current trees and shrubs, advice from the Police, Ealing Council, estate gardeners and Residents’ Association, the following draft design for the first phase of work (the Pilot Scheme) has been created.

The Pilot Scheme will renovate the northern 60 metres. This is the area shown in the following pages. The design for the rest of the central reservation will then be drawn up, allowing us to apply any lessons learnt from the pilot scheme.

Tree and shrub works within the top 60 metres should start in early January 2018. Planting will follow during the rest of January and early February. Additional bulb planting will take place in October 2018. As many of the existing plants as possible will be kept.

As with all new planting, shrubs and trees will take time to grow to the sizes shown in the design. The area will develop from first planting over the spring and summer, and will mature further over the years to come.

Maintaining colour and evergreen planting throughout the year, benefits to wildlife, and the importance of a barrier to pollution and people have all been considered in the design.

The new plants and trees proposed have been chosen to provide a balance of interesting colours, sizes and flowering times, but also to be as low maintenance and pollution tolerant as possible. Supporting birds, bees and other important insects throughout the year have also been important factors in plant selection.

A new crossing point is proposed north of the central reservation near Tudor Gardens (see page 3). Street lighting needs to be improved, as this was a concern of both the residents and Police. Ealing Council are aware of these issues and the project team are in discussions with them.

The following pages outline the design, including information on:

<b>Page 3</b>	<b>Work Phases</b>
<b>Page 4</b>	<b>Survey of Existing Planting</b>
<b>Page 5</b>	<b>Trees and shrubs to be removed, and reasons why</b>
<b>Page 6</b>	<b>Trees and shrubs to be pruned, and reasons why</b>
<b>Page 7</b>	<b>Proposed New Planting Plan</b>
<b>Page 8-10</b>	<b>Images and Information for the proposed plants</b>
<b>Page 11</b>	<b>Generic images of the existing plants to be retained</b>

Comments and questions are welcome. Please contact the Working Group by Monday 4th December.

Princes Gardens Restoration Project Working Group:

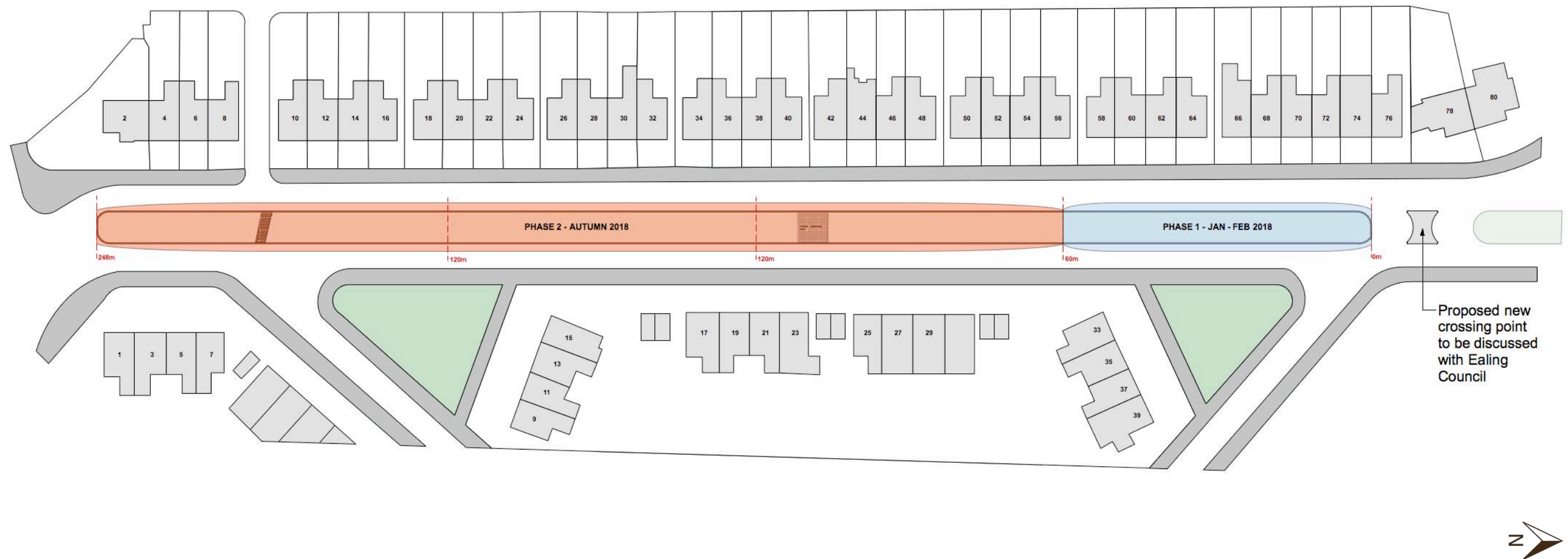
Hugh Richards	Kate Crossland	John Ward
Aleksandra Turner	Piers Mahoney	Amir Sadjady
Nim Maradas	Levon Agulian	Nkos Kassapakis
Renée McCaw	Bill Bailey	

# Princes Gardens – Work Phases

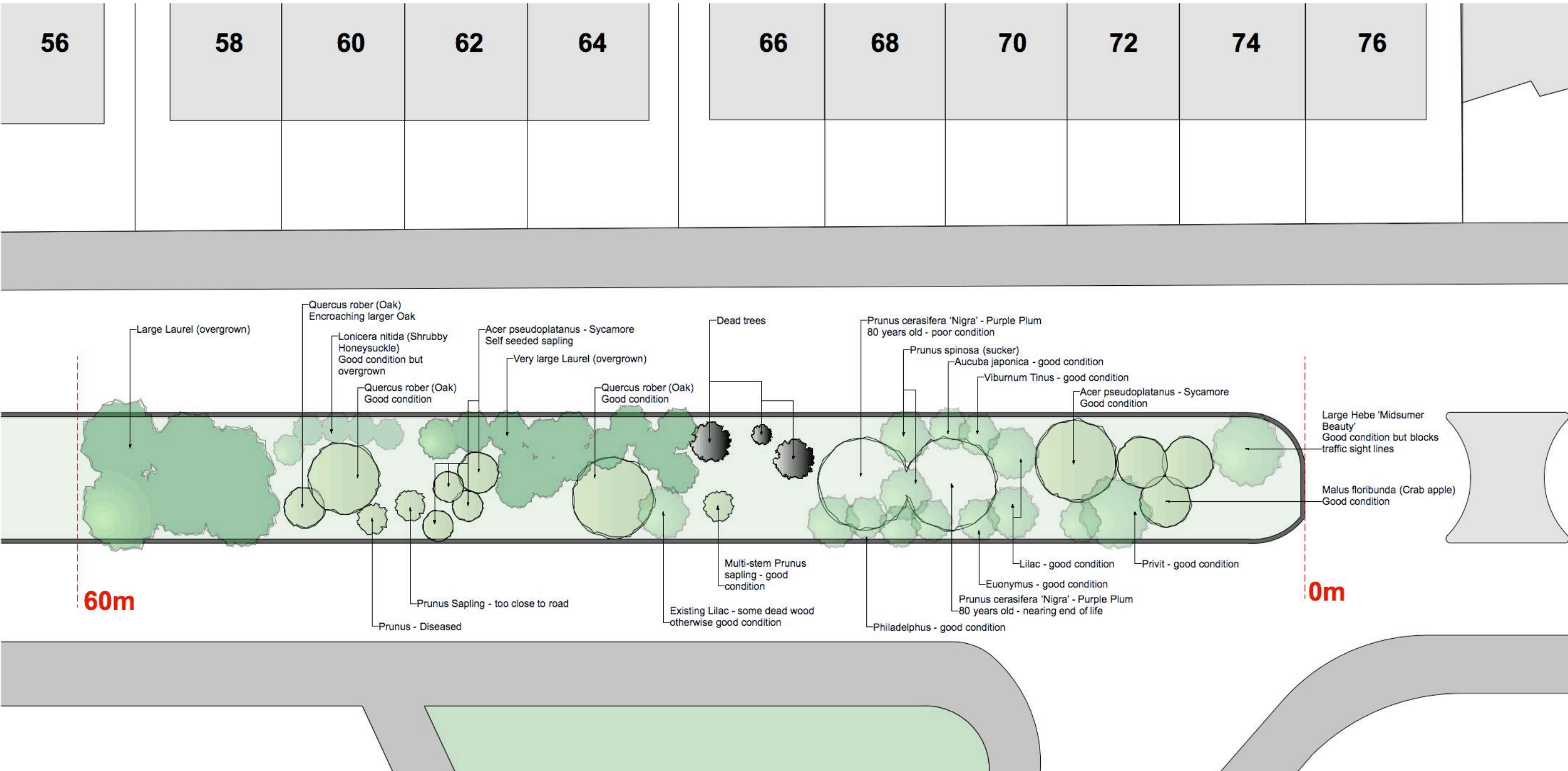
Work is to be carried out in to two phases:

**Phase 1** will address the top section of Princes Gardens, covering the first 60m, an area of 360m<sup>2</sup>. This equates to approximately a quarter of the entire space and implementation is due to commence in January 2018. This area is currently sparser than the rest of the central reservation and has been chosen as a good area for a pilot scheme. Any lessons learnt in phase 1 will be applied to phase 2

**Phase 2** will address the remaining 180m of the central reservation with work planned to commence in October 2018

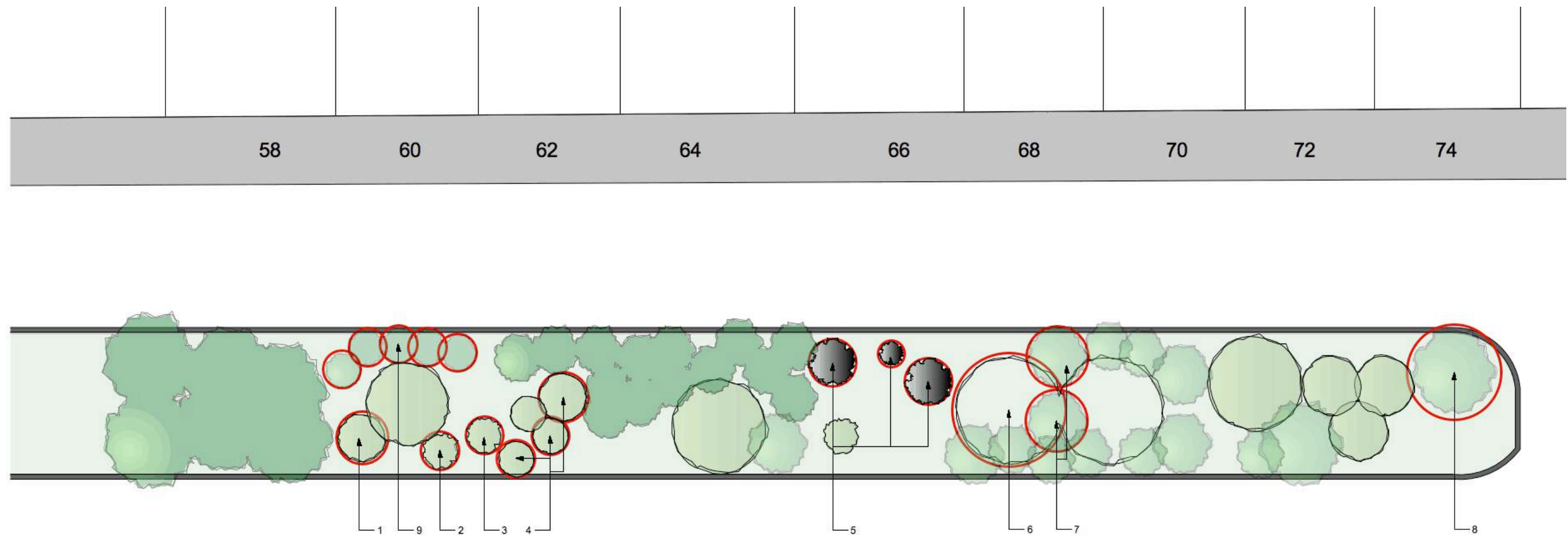


# Princes Gardens – Existing Planting



See page 11 for generic pictures of existing trees and shrubs

# Princes Gardens – Plants to Remove

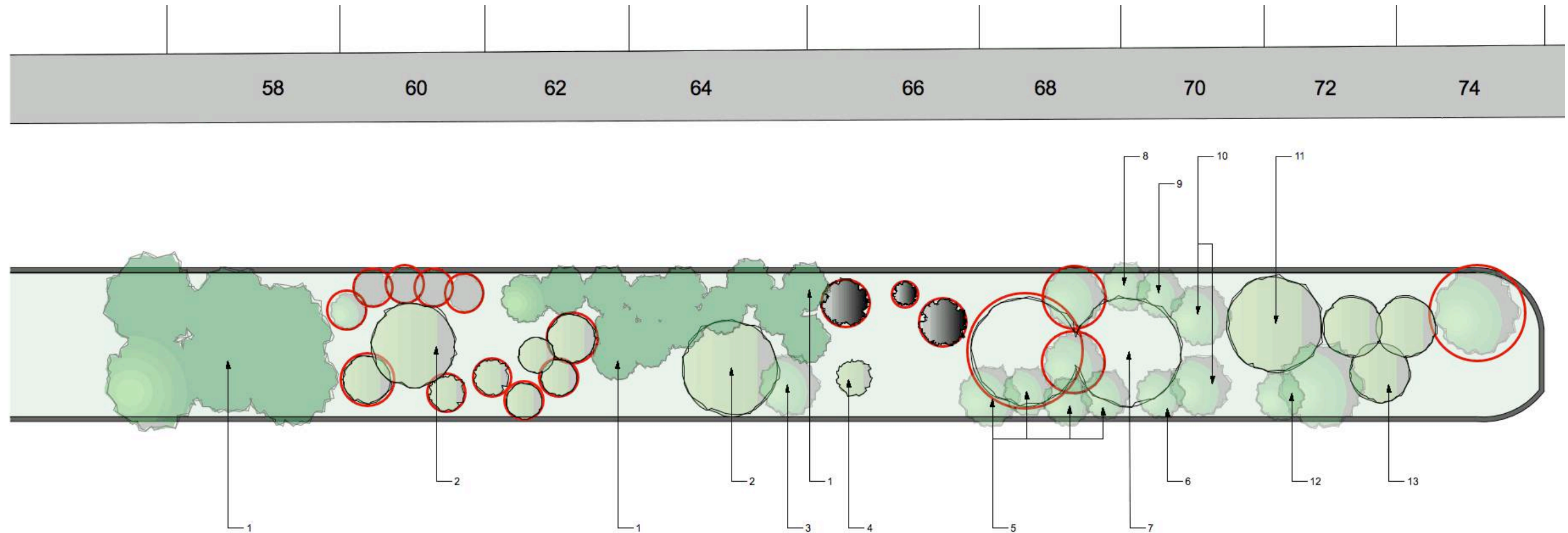


## **Rationale for Removal**

- |   |  |
|---|--|
| <p>1. <i>Quercus rober</i> (Oak)<br/>This small Oak tree is encroaching the larger Oak tree and should be removed to allow the remaining Oak tree to maintain a good shape.</p> <p>2. <i>Prunus</i><br/>Badly diseased and very close to road - removal recommended</p> <p>3. <i>Prunus</i> sapling<br/>Too close to the road - will encroach when larger - recommend removal</p> <p>4. <i>Acer pseudoplatanus</i> (Sycamore saplings)<br/>Will quickly outgrow the space and should be removed</p> <p>5. Dead trees<br/>Remove and cut down trunks to a safe height. Leave some dead material as a habitat for insects</p> | <p>6. <i>Prunus cerasifera</i> 'Nigra' (Purple Plum)<br/>Over 80 years old and nearing end of life. In very poor condition and recommend removal</p> <p>7. <i>Prunus spinosa</i> (sucker)<br/>Growing in a poor shape and encroaching remaining Purple Plum tree - recommend removal</p> <p>8. Large <i>Hebe</i> 'Midsummer Beauty'<br/>In great condition but in the wrong place, blocking drivers view of anyone crossing at this point. Recommend removal but replanting in a safer place if possible</p> <p>9. <i>Lonicera nitida</i> (Shrubby Honeysuckle)<br/>Close to road and overgrown - looking patchy</p> |
|---|--|



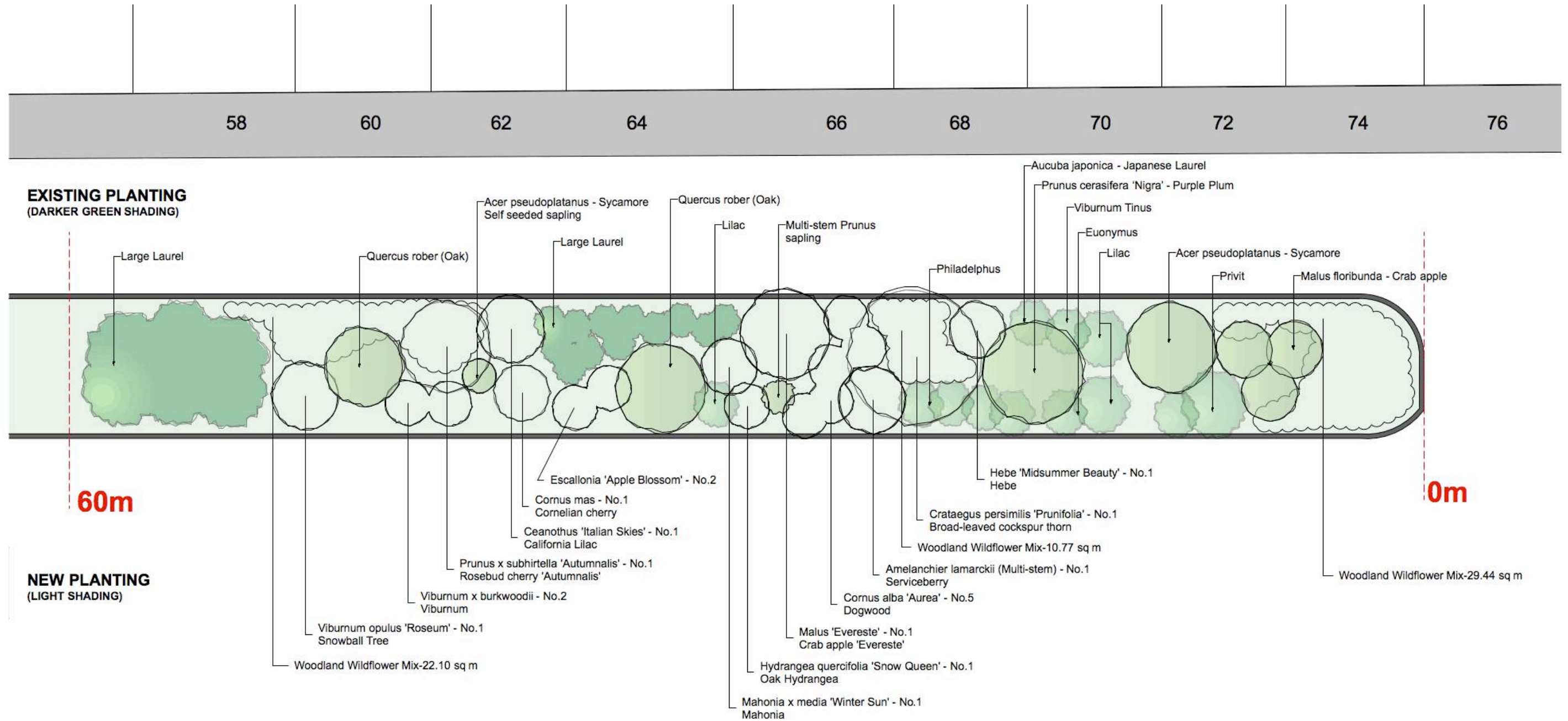
# Princes Gardens – Plants to Prune



## Pruning Requirements

1. Large Laurel  
Hard prune and shape laurel and also remove any major trunks growing within 750mm of road to reduce road overhang. Shrub will recover quickly and maintain a better shape going forward
2. Quercus robur (Oak)  
Thin out and reduce by approx. 20-25%, removing dead wood and branches that overhang road and raising canopy.
3. Lilac trees  
In good condition - prune out dead wood
4. Small multi-stemmed Prunus  
In good condition - prune out dead wood
5. Philadelphus  
Light prune to remove dead wood and tidy shape
6. Eunonymus  
Prune and reshape
7. Prunus cerasifera 'Nigra' (Purple Plum)  
Reduce by approx. 20-25%, removing dead wood and re-shaping
8. Aucuba japonica 'Variegata' (Japanese Laurel)  
Light prune and tidy
9. Viburnum tinus  
Light prune and tidy
10. Multi-stemmed Lilac trees  
Remove dead wood and tidy
11. Acer pseudoplatanus (Sycamore)  
Remove dead wood
12. Ligustrum (Privet)  
Prune & re-shape
13. Malus floribunda  
Good condition - very little work required - just remove any dead wood

# Princes Gardens – New Planting Scheme



See page 8 to 10 for generic pictures of proposed new trees and shrubs



# Princes Gardens – Phase 1 – Planting Palette – Trees



**Amelanchier lamarckii multistem**  
Serviceberry

Starting in spring, the profuse white flowers emerge in plentiful racemes (clusters along the stems), covering the tree from top to bottom. The foliage follows the blossom, emerging a coppery colour which turns to bright green by late spring. The fantastic rich red autumn colour of Amelanchier lamarckii concludes this tree’s remarkable display in conjunction with rounded fruits which are initially red in summer before turning black in the autumn.

Seasonal interest  
Bee Friendly  
Flowering tree  
5-7m high



**Cornus mas**  
Cornelian Cherry

The Cornelian Cherry is a native of central and southern Europe and gives a very long period of interest. This small growing, compact, tree has small yellow flowers that appear in February from the bare stems putting on a stunning display of colour in an otherwise gloomy month of the year! The bright red, cherry-like fruits are edible, and the leaves turn a delightful reddish purple in autumn. Will tolerate most soil conditions.

Seasonal interest  
Bee Friendly  
Flowering tree  
3-8m high



**Crataegus x prunifolia**  
Broad leaved Cockspur Thorn

White flower in the spring gives way to red hips by autumn so this tree is a popular choice for bird lovers. The green summer foliage turns a vivid yellow through to red in the autumn before leaf fall. Originating from eastern America, this tough hardy tree thrives on most soils. Needs very little maintenance, but the tree does carry thorns.

According to the RHS, this tree is particularly useful for growing in polluted urban areas

Seasonal interest  
Bee Friendly  
Good urban tree  
5-7m high



**Malus evereste**  
Crab apple

Malus evereste was introduced in the early 1980s and won the Award of Garden Merit in 2002. This stunning small tree forms a small, regular and compact crown. It is a tough performer and will thrive in most soils, especially clay.

Flowers are red in bud before turning white and are borne in profusion. The small fruits are like miniature ‘Gala’ and are held onto until they are taken by birds after Christmas. Good autumn colour that holds well.

Seasonal interest  
Bee Friendly  
Flowering tree  
5-7m high



**Prunus x subhirtella**  
**‘Autumnalis’**  
Winter flowering Cherry

This pretty cherry is unlike most other cherries, flowering during the winter months rather than the spring. The semi-double white flowers appear intermittently from November through to March.

The subtle colouring brings welcome cheer on the darkest of days. The autumn foliage is orange-yellow in colour and appears in autumn before the flowers begin to arrive.

Seasonal interest  
Bee Friendly  
Flowering tree  
3-8m high



# Princes Gardens – Phase 1 – Planting Palette – Shrubs



**Ceanothus 'Italian Skies'**  
California Lilac

'Italian Skies' is a spreading medium-sized evergreen shrub with small, glossy dark green leaves and small bright blue flowers in compact conical clusters in late spring

1.5m High / 2m spread  
Attracts bees/butterflies  
Flowers April – May



**Cornus alba 'Aurea'**  
Dogwood

Small, creamy-white flowers in May and June and gorgeous, golden-yellow leaves, which intensify in autumn and then fall to reveal stunning red stems. This vigorous red-barked dogwood look marvellous back-lit by the winter sun

3m High / 3m spread  
Winter colour



**Escallonia 'Apple Blossom'**

Masses of apple-blossom pink, tubular flowers from June to September among small, glossy, dark green leaves. This compact, bushy, evergreen shrub looks lovely towards the back of a sunny, shrub border

2.5m High / 2.5m spread  
Flowers Jun-Sep



**Hebe 'Midsummer Beauty'**  
Shrubby Veronica

'Midsummer Beauty' is a medium-sized evergreen shrub to 2m in height, rounded in habit, with long narrow leaves tinged purple when young. Small lilac-mauve flowers, fading to white, are borne in racemes to 15cm in length in summer and autumn

2m High / 1.5m spread  
Attracts bees/butterflies  
Flowers April – May



**Hydrangea quercifolia 'Snow Queen'**  
Oak leaved Hydrangea

A fantastic hydrangea, with bright green leaves shaped like giant oak leaves and large cones of white flowers in late summer. In autumn, the leaves turn dramatic shades of coral, pink and red, and the flowers fade to pale pink, then brown. A fabulous shrub that gives its best for most of the year. It's best in the middle of a partially shady border

2m High / 2m spread  
Flowers Jul-Sep



**Mahonia x media winter sun**

Slender spikes of bright yellow flowers appear from November to March, above rosettes of large, handsome, dark green, holly-like leaves. The flowers of this lovely, upright, evergreen shrub have a fragrance reminiscent of lily-of-the-valley, and seem to glow in the wintry sunlight. They are followed by bunches of highly ornamental, round, deep purple berries. This mahonia makes a lovely focal point for a shady spot in the garden, where its glossy, architectural leaves can be appreciated all year round.

3m High / 3m spread  
Flowers Nov-Mar



# Princes Gardens – Phase 1 – Planting Palette – Shrubs



**Viburnum opulus ‘Roseum’**  
Snowball tree

In May and June the branches of this vigorous deciduous shrub are smothered with large, snowball-like clusters of white or green-tinted white flowers - which sometimes age to pink. With maple-like, fresh green leaves that become purple-tinted in autumn it's an excellent ornamental plant for a sunny shrub or mixed border with fertile, moist, well-drained soil

3m High / 3m spread  
Attracts bees/butterflies  
Flowers May-Jun



2.5m High / 2.5m spread  
Flowers Apr-May

**Viburnum x burkwoodii**  
Burkwood Viburnum

Domed clusters of fragrant white flowers in April and May, opening from pink buds, followed by red fruit, and glossy, dark green leaves. This Viburnum is one of the best scented varieties and is usually evergreen when the plant matures. To fully appreciate the fabulously fragrant flowers chose a partly shady border close to an entrance or path.



**Woodland Meadow Mix**

PM Turf is 100% floriferous material, meaning no grasses are added to the mix. This is because grasses quickly out-compete other plant-life, damaging the overall effect of the meadow and reducing its lifespan. PM turf meadows attract as much wildlife as possible so there are plants in the mixes which will flower right through to the first frosts, and species whose seed heads provide valuable winter feed for birds.



**Log Piles for Nature**

Plenty of wildlife makes its home in dead wood, and other animals use it as a source of food. In woodlands, fallen wood occurs naturally and many species have adapted to use this habitat. But in our increasingly tidy countryside, fallen and dead wood is not so common.

A pile of logs simulates fallen trees and is considered essential in a wildlife garden.

Thin piles of logs and branches, help within timber stakes can also be used as nature friendly barriers at certain points along the central reservation. This would create a visual barrier to prevent cars mounting the reservation and discourage people to cross.



# Princes Gardens – Phase 1 – Planting Palette – Existing Planting to Stay



**Acer pseudoplatanus**  
Sycamore



**Aucuba Japonica**  
Japanese Laurel



**Prunus laurocerasus**  
Cherry Laurel



**Euonymus**  
Spindle



**Malus floribunda**  
Crab apple



**Philadelphus**  
Mock Orange



**Ligustrum ovalifolium**  
Privet



**Prunus spinose**  
Blackthorne



**Prunus cerasifera 'Nigra'**  
Purple plum



**Quercus robur**  
Oak



**Syringia**  
Lilac



**Viburnum tinus**  
Laurustinus

