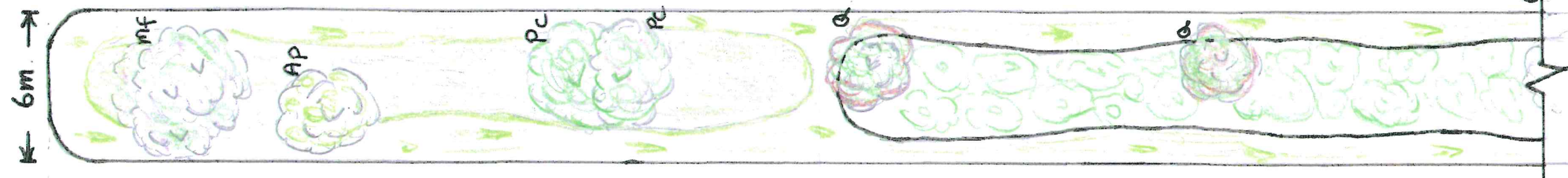


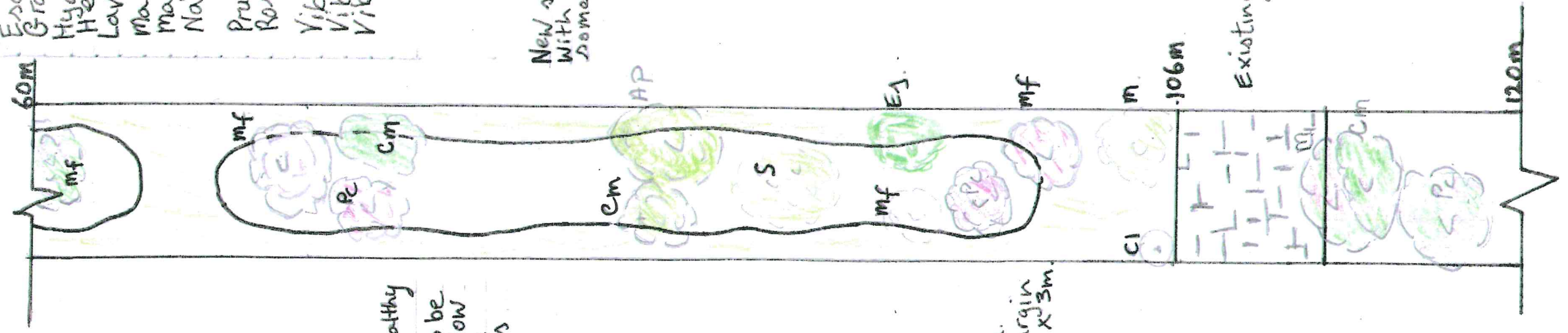
No 80 P.G.



- Existing trees
- mf Malus floribunda (crab apple)
 - Pc Prunus cerasifera (Purple plum) Nigra
 - AP Acer pseudoplatanus (Sycamore)
 - a Quercus robur (English oak)
 - Cm Crataegus monogyna (Hawthorn)
 - S Syringa vulgaris (Lilac)
 - Ej Erubotrya japonica (Loquat)
 - Cl Chamaecyparis lawsoniana
 - L Laburnum
 - Pa Prunus avium
 - P Pyracantha

Remove shrubs and saplings. Keep existing healthy trees.
 Shaded area to be wild flower meadow with maintained grass margins

New Shrub bed with grass margin Island bed 30m x 3m.



Existing paved crossing

New shrub bed 32m x 3m. With existing trees and some shrubs remaining

- Proposed New Plant List
- Abelia grandiflora
 - Aucuba japonica
 - Camellia species
 - Cornus S. Midwinter Fire
 - Ceanothus Repens

- Euonymus japonicus
- Euonymus Emerald n Gold.
- Escallonia (Apple Blossom)
- Grass species
- Hydrangea paniculata
- Hebe Midsummer Beauty
- Lavandula angustifolia
- Mahonia x media Winter Sun
- Magnolia stellata
- Nandina domestica

- Prunus l. Otto luyken
- Roses (shrub species)
- Viburnum plicatum Mariesii
- Viburnum Opulus
- Viburnum x burkwoodii